The Fujitsu logo, featuring the word "FUJITSU" in a white, serif font with a stylized infinity symbol above the "J".

FUJITSU

AUSTRALIA'S FAVOURITE AIR®

DUCTED RANGE

AIR CONDITIONING
SOLUTIONS

A photograph of a man and a young boy sitting on a light-colored sofa. The man, wearing a blue shirt, is holding a tablet and looking at it with a smile. The boy, wearing a grey shirt, is also smiling and looking at the tablet. The background is a bright, indoor setting.

HIGH ENERGY EFFICIENCY
BACKED BY A 5 YEAR FULL PARTS & LABOUR WARRANTY

WHY CHOOSE FUJITSU?

AUSTRALIA'S FAVOURITE AIR®

Fujitsu General is a leading supplier of air conditioning products in Australia. We've focused all of our research and manufacturing capability into producing world-class, market-leading air conditioners for most Australian homes and commercial spaces.

Fujitsu General strives to consistently provide high quality, reliable products accompanied by superior customer service. As 'Australia's Favourite Air®' we're on a mission to not simply be the best air conditioning company in Australia, but the best Australian company to deal with.

PEACE OF MIND

Fujitsu General believes in the quality and reliability of every air conditioner we sell. That's why we provide a 5 year full parts and labour warranty for all domestic air conditioning systems sold in Australia.



FUJITSU CHANNEL PARTNER NETWORK

Fujitsu General has a comprehensive network of air conditioning dealers across Australia, which means there is always a local stockist to assist our customers in finding the right Fujitsu air conditioning system for their home.



VOTED BY AUSTRALIANS AS THE 'MOST TRUSTED BRAND - AIR CONDITIONING CATEGORY 4 YEARS RUNNING'

Fujitsu understands that our customers are investing in our brand and trusting that we will provide their family with a comfortable living environment all year round. Fujitsu is honoured to be voted Reader's Digest Most Trusted Brand in the Air Conditioning category 4 years running and awarded Best Rated Split System Air Conditioner by Finder.

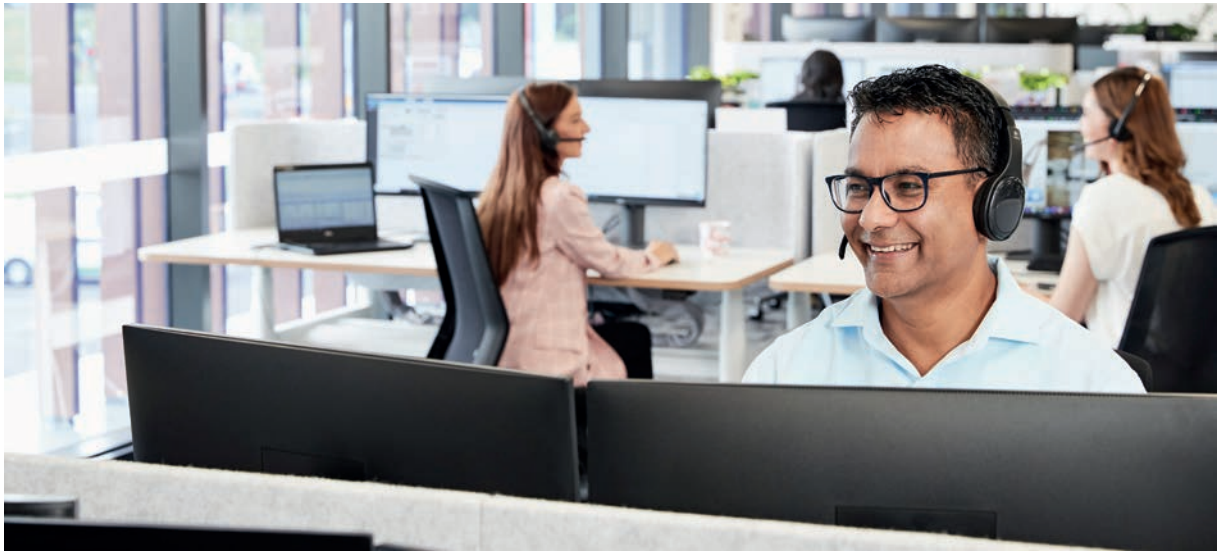




WHY CHOOSE FUJITSU?

EXCEPTIONAL AFTER SALES SERVICE

At Fujitsu, we pride ourselves on providing exceptional customer service. Fujitsu General Assist is our in-house customer care and technical support department which was implemented to deliver a high level of support and accessibility to our customers.



Fujitsu General Assist deploys Fujitsu trained technicians in Sydney, Melbourne, Brisbane, Adelaide and Perth and provides access to dedicated Service Agents in all other parts of Australia. These technicians are well equipped with the necessary tools and spare parts to enable them to resolve issues onsite, promptly. This offers customers a high first time fix rate and seamless experience.



STATE OF THE ART RESEARCH AND DEVELOPMENT

Our state of the art research and development centre, located at our headquarters in Japan, is equipped with numerous testing facilities simulating a variety of air conditioning operating conditions.

SYSTEM PERFORMANCE TESTING INCLUDES:

- Evaluating heating and cooling capacity under varied temperature and humidity conditions
- Testing air volume and air flow distance
- Measuring operating noise
- Evaluating system's durability to withstand outdoor weather extremes

This rigorous testing aims to meet Fujitsu's high standard of product quality and reliability.



DUCTED RANGE

WHAT IS DUCTED AIR CONDITIONING AND HOW DOES IT WORK?

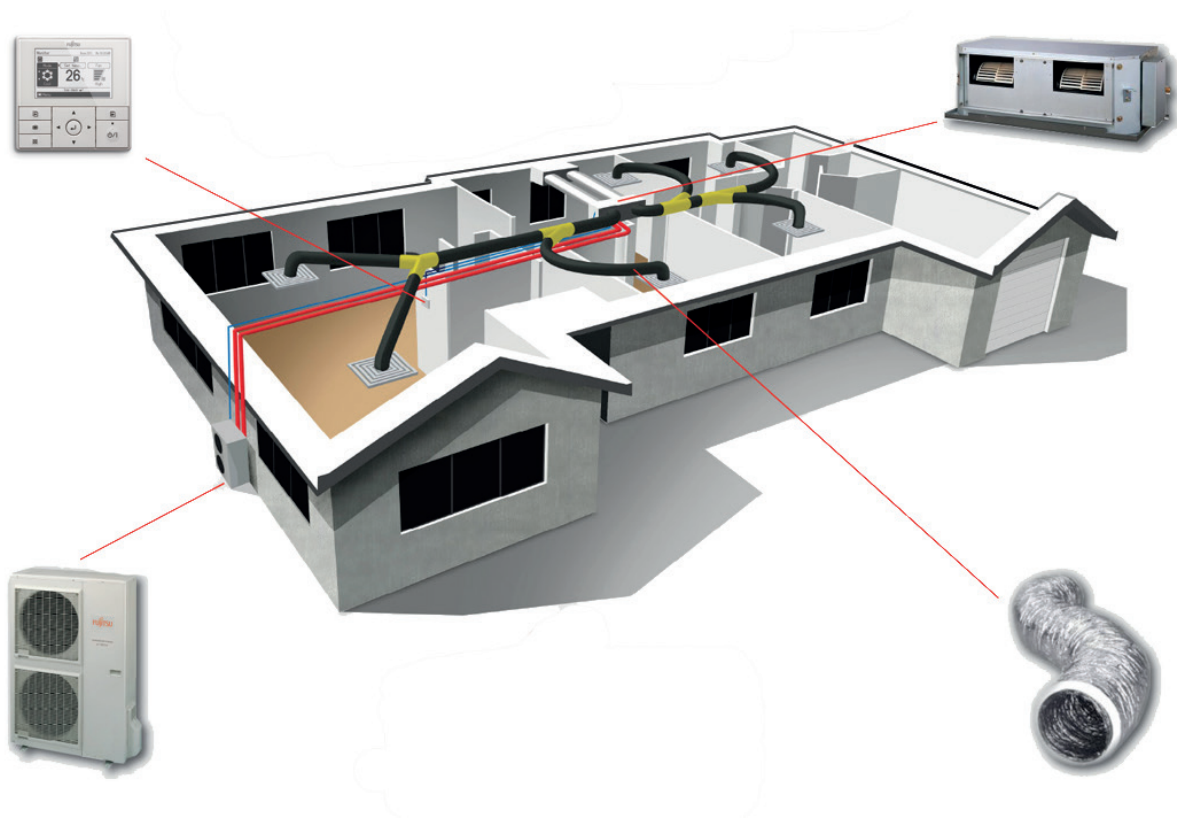
Ducted air conditioning is usually a whole home solution that allows you to condition multiple rooms or the entire house using just one system.

The indoor unit is usually located in the ceiling or under the floor. Whilst the outdoor unit is placed in a suitable location outside the home.

Conditioned air is circulated via a network of ducts in your ceiling or floor cavity, with outlets in as many or as few rooms as you wish.

The temperature and hours of operation are controlled by a simple and easy to use control panel.

All Fujitsu ducted air conditioners are reverse cycle, meaning they can keep you warm in winter and cool in summer.



WHAT IS ZONE CONTROL?

Ducted air conditioning with zone control capabilities allows for different zones (areas) to be set up in your home for optimal comfort and energy management. The system adjusts airflow through dampers to control the air conditioning of the zones to reach the desired temperature.

The Fujitsu optional backlit zone controller, when connected to a zone interface, allows for up to 8 zones to be set, where users can rename the zone on the easy-to-use wired controller.

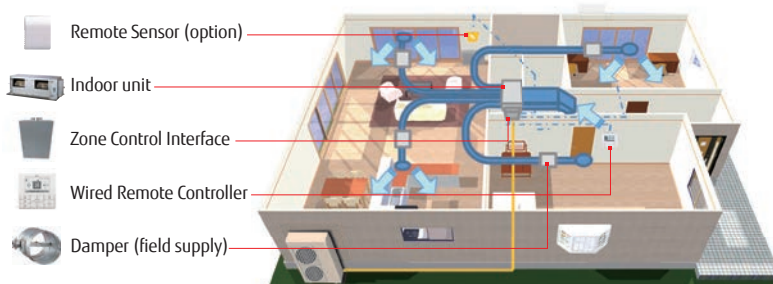
For example, Zone 1 - Living Area, Zone 2 - Bedrooms and so on.

ENERGY EFFICIENCY

By using the weekly timer function, dampers can be opened and closed to match your daily schedule. It's a 'set and forget' way to keep the temperature of your home comfortable all year round.

USER-FRIENDLY FUNCTIONS

The user-friendly control features a large display for 'Mode', 'Set Temp' and 'Fan' with each function represented by an intuitive icon. The wired remote features a backlight for easy operation in the dark.



WIRED CONTROLLER#

FEATURES:

- Thermo sensor
- Weekly timer
- Easy to understand operation
- Timer and clock display
- Temperature display



UTY-RNNYN

BACKLIT CONTROLLER*

FEATURES:

- Zone names can be programmed
- Weekly timer
- Simple operation
- Room temperature displayed on home screen
- Child lock



UTY-RVNYN

TOUCH SCREEN CONTROLLER**

FEATURES:

- Touch screen LCD panel
- Built in weekly/daily timer and auto off timer
- Backlight
- Room temperature display



UTY-RNRYZ3

Accessory for ARTG09/12LLLB | ARTG18LLTA | ARTG24LMLC | ARTA30LBTU | ARTA36/45LATU

* Optional extra for ARTG09/12LLLB | ARTG18LLTA | ARTG24LMLC | ARTA30LBTU | ARTA36/45LATU

** Optional extra for ARTG_LHTDP | ARTG_LDTA

Control your air from anywhere with Fujitsu



anywAIR[®]
technology

WI-FI CONTROL FOR FUJITSU DUCTED AIR CONDITIONERS*

The Fujitsu General anywAiR[®] technology ducted controller provides Wi-Fi control for Fujitsu ducted air conditioning systems via a wall mounted touch pad. Remote access is available using the anywAiR App,* giving control of your ducted system anytime, anywhere with selected smartphone and tablet devices.



Model: UTY-ANY1

EASY TO USE TOUCH PAD

Mounted portrait or landscape to the wall by a Fujitsu air conditioning specialist, the anywAiR technology ducted controller is simple to set-up using a Google Play Store account. The touch pad is the central point from which to operate the air conditioner and can be used to manage a variety of Android apps such as weather, recipes, music and other home automation apps.

SIMPLE CONTROL FEATURES

Basic control features of the anywAiR technology ducted controller touch pad include:



AC CONTROL

On/Off, fan speed, set point and mode



TIMERS

Turn the aircon unit On/Off after a set time



SCENARIOS

Program scenes through custom settings

0-100%

VARIABLE AIR VOLUME (VAV)#

Select the percentage of air flow for each zone



TEMPERATURE CONTROLLED (VAV)^

Control temperature and airflow in up to 10 zones

VARIABLE AIR VOLUME (VAV)

Variable Air Volume (VAV) control allows the user to select the percentage of air flow for each zone from 0 to 100 percent, in 5 percent increments. This gives you greater control of airflow to each zone to better meet your comfort needs.

TEMPERATURE CONTROLLED (VAV)

Temperature Controlled (VAV) is available if optional temperature sensors are installed in each zone. This optional feature allows the user to choose the desired temperature for a zone and the system will automatically adjust the air flow to assist in maintaining each zones desired temperature.



*The anywAiR App is only compatible with a selected range of Fujitsu General ducted air conditioning when the optional anywAiR technology ducted controller is installed. It is not a standard inclusion when purchasing a Fujitsu ducted air conditioning system and must be installed by a Fujitsu air conditioning specialist. Apple, the Apple logo, iPhone and Siri are trademarks of Apple Inc., registered in the U.S. and other countries. App Store is a service mark of Apple Inc. ©2019 Google LLC All rights reserved. Google Play and the Google Play logo are trademarks of Google LLC. Other trademarks and tradenames are acknowledged to be the copyright of their respective holders. #VAV control is achieved by adjusting the opposed blade damper to control the airflow. The airflow fan setting (high/med/low/auto) of the system works independently to this function. ^Requires optional individual room sensors to be installed.

WI-FI DUCTED CONTROLLER

PROGRAMMABLE SCENARIOS

Create up to 12 custom scenes to run a series of commands at the touch of a button or at a chosen time. Commands can include turning the unit on and off, changing the mode or temperature, and selecting which zones are open. Scenarios such as going to work, coming home and bedtime can be programmed to control the air flow and temperature to rooms required at set times.



DOWNLOAD THE APP



anywAiR® app

Remote air conditioner control

GET

1. Download the anywAiR App from the App Store or Google Play
 2. Follow the App configuration steps
 3. Once set up, the anywAiR App interacts with the anywAiR technology ducted controller to remotely control your air conditioner
- Control On/Off, Fan Speed, Set Point Temperature and Mode
 - Set up Timers
 - Program scenarios through custom settings
 - Individually control the temperature and air flow to up to 10 different zones within the home
 - Custom zone naming

MOUNTING

Your anywAiR technology touch pad is permanently attached to your wall with the ability to pivot between portrait and landscape modes so that you can enjoy all your apps in the orientation that suits them best. To be installed by an authorised Fujitsu air conditioning specialist only.



OPPOSED BLADE DAMPERS

The anywAiR technology Opposed Blade in line dampers will be offered as part of our anywAiR technology ducted controller range. These dampers have been tried and tested with our controller ensuring precise airflow control and comes with the full 5 years warranty. These dampers are our endorsed and recommended damper.



8 inch



10 inch

SIZES:

- ZM-ANY8 - 8 inch / 200mm
- ZM-ANY10 - 10 inch / 250mm
- ZM-ANY12 - 12 inch / 300mm
- ZM-ANY14 - 14 inch / 350mm
- ZM-ANY16 - 16 inch / 400mm

OPTIONAL PARTS: TS-ANY – Wireless temperature sensor | ETH-ANY – 25m Ethernet

DIMENSIONS



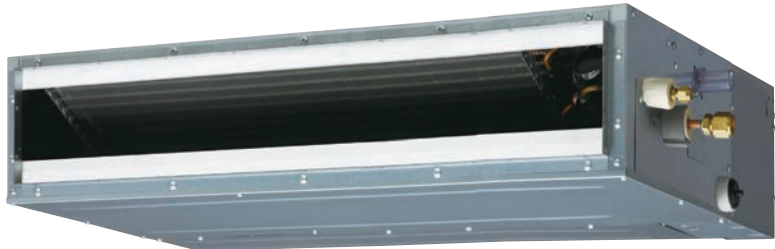
PARTS INCLUDED WITH THE UTY-ANY1:

- 1 x Touch Pad
- 2 x Wireless Temperature Sensors
- 1 x Control Box
- 1 x Power Supply
- 1 x Connecting Cable
- 1 x 12m Ethernet Power Cable
- 1 x Control Link Cable

BULKHEAD



ARTG09/12LLL



ARTG18LLT



AOTG09/12LBCB
AOTG18LACC



WIRED CONTROLLER
UTY-RNNYN

EASY, FLEXIBLE INSTALLATION

COMPACT DESIGN

Bulkhead type ducted air conditioners are designed to allow for flexible installation in the best available space.

QUIET AND EFFICIENT

Quiet, efficient and easy to maintain, offering perfect comfort for the room it is installed in.

INTUITIVE CONTROL

The easy-to-use LCD controller helps you get the best out of your system.

FEATURES CHECKLIST

| FEATURES | ARTG09LLL B | ARTG12LLL B | ARTG18LLTA |
|--------------------------------|-------------|-------------|------------|
| All DC Components | ✓ | ✓ | ✓ |
| Auto Changeover | ✓ | ✓ | ✓ |
| Auto Restart | ✓ | ✓ | ✓ |
| Automatic Fan Speed Adjustment | ✓ | ✓ | ✓ |
| Automatic Airflow Adjustment | | | |
| Blue Fin Heat Exchanger | ✓ | ✓ | ✓ |
| Connectable Distributing Duct | ✓ | ✓ | ✓ |
| Control Port | ✓ | ✓ | ✓ |
| Economy Mode | ✓ | ✓ | ✓ |
| Error Code Display | ✓ | ✓ | ✓ |
| Fresh Air Intake | ✓ | ✓ | ✓ |
| On-Off Timer | ✓ | ✓ | ✓ |
| Weekly Timer & Setback | ✓ | ✓ | ✓ |
| Zone Control | | | |

For Product Specifications turn to page 28

SLIMLINE



ARTG24LMLC
ARTA30LBTU
ARTA36/45LATU



WIRED CONTROLLER
UTY-RNNYN



AOTG24LATC
AOTA30LGTL



AOTA36/45LCTL

SLIM, COMPACT DESIGN

COMPACT DESIGN

Slimline type ducted air conditioners are slim and compact in design in order to fit into most ceiling spaces, making it ideal for installation to be discreet.

QUIET AND EFFICIENT

Quiet, efficient and easy to maintain, offering perfect comfort for the room it is installed in.

INTUITIVE CONTROL

Operated from an easy-to-use LCD control, you can change the settings for mode, fan speed and set temperature and also program the weekly timer to maintain temperature with minimal fuss.

FEATURES CHECKLIST

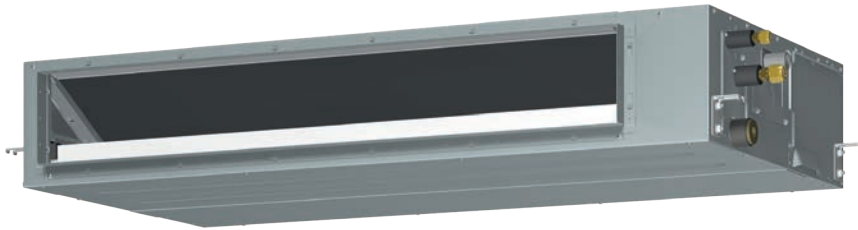
| FEATURES | ARTG24LMLC | ARTA30LBTU | ARTA36LATU | ARTA45LATU |
|--------------------------------|------------|------------|------------|------------|
| All DC Components | ✓ | ✓ | ✓ | ✓ |
| Auto Changeover | ✓ | ✓ | ✓ | ✓ |
| Auto Restart | ✓ | ✓ | ✓ | ✓ |
| Automatic Fan Speed Adjustment | ✓ | ✓ | ✓ | ✓ |
| Automatic Airflow Adjustment | | | | |
| Blue Fin Heat Exchanger | ✓ | ✓ | ✓ | ✓ |
| Connectable Distributing Duct | ✓ | ✓ | ✓ | ✓ |
| Connectable Fresh Air Duct | ✓ | ✓ | ✓ | ✓ |
| Control Port | ✓ | ✓ | ✓ | ✓ |
| Economy Mode | ✓ | ✓ | ✓ | ✓ |
| Fresh Air Intake | ✓ | ✓ | ✓ | ✓ |
| Filter Sign | ✓ | ✓ | ✓ | ✓ |
| On-Off Timer | ✓ | ✓ | ✓ | ✓ |
| Program Timer | ✓ | ✓ | ✓ | ✓ |
| Weekly Timer | ✓ | ✓ | ✓ | ✓ |
| Zone Control | | | | |

For Product Specifications turn to page 29

MID STATIC SLIMLINE R32 & MID STATIC SLIMLINE R32 (HP)



ARTH18/24*KMTAP



ARTH30*/36/45/54KMTAP



WIRED CONTROLLER
UTY-RNRT



AOTH18KBTA



AOTH24KBTA



AOTH30/36KBTA



AOTH45/54KBTA
AOTH24*/30*KCTA

*HIGH PERFORMANCE
(HP) MODELS

SLIM, COMPACT DESIGN

EASY INSTALLATION, COMPACT DESIGN

Mid Static Slimline R32 type ducted air conditioners are compact in design with a height of just 240mm and a built-in drain pump, for easy installation in tighter bulkhead and ceiling applications. The compact format of this indoor unit was achieved by redesigning the fins, without compromising the performance. The Mid Static Slimline R32 High Performance (HP) models have a maximum pipe length of 75m for installation on the roof and in plant rooms in residential apartment buildings.

IMPROVED OPERATING TEMPERATURE RANGE

The maximum guaranteed operating temperature range during cooling has increased from up to 46 degrees to 50 degrees for both Mid Static Slimline R32 and R32 (HP) models.

CONTROL OPTIONS

The included wired controller enables you to easily change the settings for mode, fan speed, and set temperature. For optimal comfort and energy management, these models are compatible with an optional zone control system which allows for the home to be divided into separate areas or 'zones'. Both the Mid Static Slimline R32 and R32 (HP) models are also compatible with the anywAiR® technology ducted controller which provides Wi-Fi control via the anywAiR® app with selected smartphone and tablet devices.

FEATURES CHECKLIST

| FEATURES | ARTH18KMTAP | ARTH24*KMTAP | ARTH30*KMTAP | ARTH36KMTAP | ARTH45KMTAP | ARTH54KMTAP |
|--------------------------------------|-------------|--------------|--------------|-------------|-------------|-------------|
| 50°C Operating Range | ✓ | ✓ | ✓ | ✓ | ✓ | ✓ |
| All DC Components | ✓ | ✓ | ✓ | ✓ | ✓ | ✓ |
| Auto Changeover | ✓ | ✓ | ✓ | ✓ | ✓ | ✓ |
| Auto Restart | ✓ | ✓ | ✓ | ✓ | ✓ | ✓ |
| Automatic Airflow Adjustment | ✓ | ✓ | ✓ | ✓ | ✓ | ✓ |
| Automatic Fan Speed Adjustment | ✓ | ✓ | ✓ | ✓ | ✓ | ✓ |
| Automatic Static Pressure Adjustment | ✓ | ✓ | ✓ | ✓ | ✓ | ✓ |
| Blue Fin Heat Exchanger | ✓ | ✓ | ✓ | ✓ | ✓ | ✓ |
| Connectable Distributing Duct | ✓ | ✓ | ✓ | ✓ | ✓ | ✓ |
| Connectable Fresh Air Duct | ✓ | ✓ | ✓ | ✓ | ✓ | ✓ |
| Control Port | ✓ | ✓ | ✓ | ✓ | ✓ | ✓ |
| Demo Mode | ✓ | ✓ | ✓ | ✓ | ✓ | ✓ |
| Economy Mode | ✓ | ✓ | ✓ | ✓ | ✓ | ✓ |
| Fresh Air Intake | ✓ | ✓ | ✓ | ✓ | ✓ | ✓ |
| Filter Sign | ✓ | ✓ | ✓ | ✓ | ✓ | ✓ |
| In-Built Drain Pump | ✓ | ✓ | ✓ | ✓ | ✓ | ✓ |
| On-Off Timer | ✓ | ✓ | ✓ | ✓ | ✓ | ✓ |
| Program Timer | ✓ | ✓ | ✓ | ✓ | ✓ | ✓ |
| Weekly Timer | ✓ | ✓ | ✓ | ✓ | ✓ | ✓ |
| Zone Control | ✓ | ✓ | ✓ | ✓ | ✓ | ✓ |

For Product Specifications turn to pages 30 and 31

SLIMLINE PLUS



ARTG24/30LHTDP



ARTG36/45/54LHTDP



BACKLIT CONTROLLER
UTY-RVNYN



AOTG24LBCA



AOTG30/36LBTA



AOTG45/54LBTB

SLIM, COMPACT DESIGN

COMPACT AND FLEXIBLE DESIGN

Slimline type ducted air conditioners are slim and compact in design in order to fit into most ceiling spaces, making it ideal for installation to be discreet. The adjustable static pressure feature along with optional zone controller connectivity allows greater flexibility with installation and adjustable airflow for improved comfort.

QUIET AND EFFICIENT

Quiet, efficient and easy to maintain, offering perfect comfort for the room it is installed in.

INTUITIVE CONTROL

Operated from an easy-to-use LCD control, you can change the settings for mode, fan speed and set temperature and also program the weekly timer to maintain temperature with minimal fuss.

FEATURES CHECKLIST

| FEATURES | ARTG24LHTDP | ARTG30LHTDP | ARTG36LHTDP | ARTG45LHTDP | ARTG54LHTDP |
|--------------------------------|-------------|-------------|-------------|-------------|-------------|
| All DC Components | ✓ | ✓ | ✓ | ✓ | ✓ |
| Auto Changeover | ✓ | ✓ | ✓ | ✓ | ✓ |
| Auto Restart | ✓ | ✓ | ✓ | ✓ | ✓ |
| Automatic Fan Speed Adjustment | ✓ | ✓ | ✓ | ✓ | ✓ |
| Automatic Airflow Adjustment | ✓ | ✓ | ✓ | ✓ | ✓ |
| Blue Fin Heat Exchanger | ✓ | ✓ | ✓ | ✓ | ✓ |
| Connectable Distributing Duct | ✓ | ✓ | ✓ | ✓ | ✓ |
| Connectable Fresh Air Duct | ✓ | ✓ | ✓ | ✓ | ✓ |
| Control Port | ✓ | ✓ | ✓ | ✓ | ✓ |
| Economy Mode | ✓ | ✓ | ✓ | ✓ | ✓ |
| Fresh Air Intake | ✓ | ✓ | ✓ | ✓ | ✓ |
| On-Off Timer | ✓ | ✓ | ✓ | ✓ | ✓ |
| Program Timer | ✓ | ✓ | ✓ | ✓ | ✓ |
| Weekly Timer | ✓ | ✓ | ✓ | ✓ | ✓ |
| Zone Control | ✓ | ✓ | ✓ | ✓ | ✓ |

For Product Specifications turn to page 32

HIGH STATIC SINGLE PHASE – COMPACT OUTDOOR



ARTG30/36LHTA



ARTG45LHTA



BACKLIT CONTROLLER
UTY-RVNYN



AOTG30LBTC



AOTG36/45LBTC

WHOLE HOME COMFORT AND CONTROL

COMPACT DESIGN

The new outdoor units are much more compact and lightweight offering greater flexibility around installation.

ZONE CONTROL

Optional zone control allows for up to 8 zones to be connected, giving greater control to meet your individual needs.

POWER SUPPLY

Use of single phase power allows for greater flexibility and minimises installation costs as there is no need to upgrade to a three phase power supply.

FEATURES CHECKLIST

| FEATURES | ARTG30LHTA | ARTG36LHTA | ARTG45LHTA |
|--------------------------------|------------|------------|------------|
| All DC Components | ✓ | ✓ | ✓ |
| Auto Changeover | ✓ | ✓ | ✓ |
| Auto Restart | ✓ | ✓ | ✓ |
| Automatic Fan Speed Adjustment | ✓ | ✓ | ✓ |
| Automatic Airflow Adjustment | | | |
| Blue Fin Heat Exchanger | ✓ | ✓ | ✓ |
| Connectable Distributing Duct | ✓ | ✓ | ✓ |
| Connectable Fresh Air Duct | ✓ | ✓ | ✓ |
| Control Port | ✓ | ✓ | ✓ |
| Economy Mode | ✓ | ✓ | ✓ |
| Filter Sign | ✓ | ✓ | ✓ |
| Fresh Air Intake | ✓ | ✓ | ✓ |
| On-Off Timer | ✓ | ✓ | ✓ |
| Program Timer | ✓ | ✓ | ✓ |
| Weekly Timer | ✓ | ✓ | ✓ |
| Zone Control | ✓ | ✓ | ✓ |

For Product Specifications turn to page 33

HIGH STATIC SINGLE PHASE



ARTG30/36LHTA



ARTG45LHTA
ARTG54LHTC



BACKLIT CONTROLLER
UTY-RVNYN



AOTG30/36/45LATL
AOTG54LCTL

WHOLE HOME COMFORT AND CONTROL

INCREASED NUMBER OF OUTLETS

High static ducted air conditioning allows for an increased number of air ducts to be installed.

ZONE CONTROL

Optional zone control allows for up to 8 zones to be connected, giving greater control to meet your individual needs.

POWER SUPPLY

Use of single phase power allows for greater flexibility and minimises installation costs as there is no need to upgrade to a three phase power supply.

FEATURES CHECKLIST

| FEATURES | ARTG30LHTA | ARTG36LHTA | ARTG45LHTA | ARTG54LHTC |
|--------------------------------|------------|------------|------------|------------|
| All DC Components | ✓ | ✓ | ✓ | ✓ |
| Auto Changeover | ✓ | ✓ | ✓ | ✓ |
| Auto Restart | ✓ | ✓ | ✓ | ✓ |
| Automatic Fan Speed Adjustment | ✓ | ✓ | ✓ | ✓ |
| Automatic Airflow Adjustment | | | | |
| Blue Fin Heat Exchanger | ✓ | ✓ | ✓ | ✓ |
| Connectable Distributing Duct | ✓ | ✓ | ✓ | ✓ |
| Connectable Fresh Air Duct | ✓ | ✓ | ✓ | ✓ |
| Control Port | ✓ | ✓ | ✓ | ✓ |
| Economy Mode | ✓ | ✓ | ✓ | ✓ |
| Filter Sign | ✓ | ✓ | ✓ | ✓ |
| Fresh Air Intake | ✓ | ✓ | ✓ | ✓ |
| On-Off Timer | ✓ | ✓ | ✓ | ✓ |
| Program Timer | ✓ | ✓ | ✓ | ✓ |
| Weekly Timer | ✓ | ✓ | ✓ | ✓ |
| Zone Control | ✓ | ✓ | ✓ | ✓ |

For Product Specifications turn to page 34

HIGH STATIC INFINITY RANGE – SINGLE PHASE & THREE PHASE



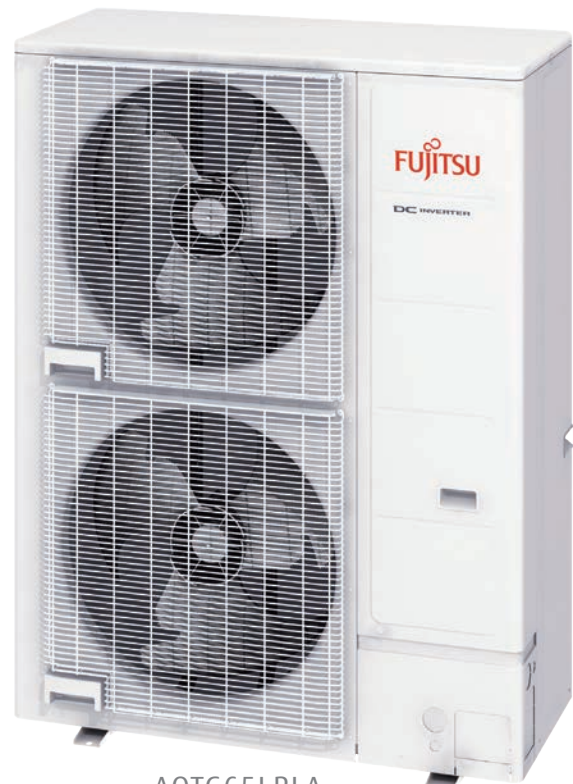
ARTG45/54/60LDTA (SINGLE PHASE)
ARTG65LHTA (THREE PHASE)



BACKLIT CONTROLLER
UTY-RVNYN



AOTG45/54/60LBTA
(SINGLE PHASE)



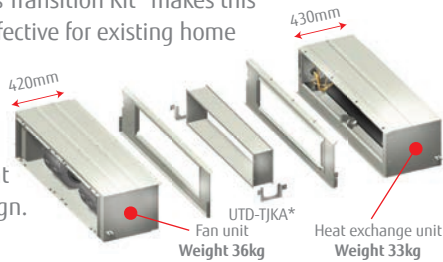
AOTG65LRLA
(THREE PHASE)

WHOLE HOME COMFORT AND CONTROL

EASY INSTALLATION

The indoor unit can be separated into a fan unit and heat exchanger, to assist with in-roof installation. This is ideal for existing home installations, as each part can fit through an access panel and be reassembled in the ceiling. The optional Truss Transition Kit* makes this even more effective for existing home installations.

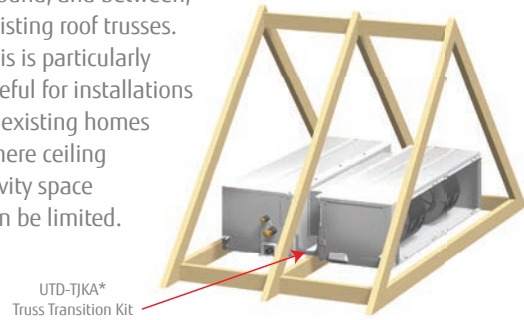
Separation is possible by lightweight compact design.



*Optional Part UTD-TJKA

OPTIONAL TRUSS TRANSITION KIT

Available as an optional extra, the Truss Transition Kit enables greater flexibility to install the indoor unit around, and between, existing roof trusses. This is particularly useful for installations in existing homes where ceiling cavity space can be limited.



ZONE CONTROL

Optional zone control allows for up to 8 zones to be connected,

INCREASED NUMBER OF OUTLETS

High static ducted air conditioning allows for an increased number of air ducts to be installed.

FEATURES CHECKLIST

| FEATURES | ARTG45LDTA | ARTG54LDTA | ARTG60LDTA | ARTG65LHTA |
|--------------------------------|--------------|--------------|--------------|-------------|
| | SINGLE PHASE | SINGLE PHASE | SINGLE PHASE | THREE PHASE |
| All DC Components | ✓ | ✓ | ✓ | ✓ |
| Auto Changeover | ✓ | ✓ | ✓ | ✓ |
| Auto Restart | ✓ | ✓ | ✓ | ✓ |
| Automatic Fan Speed Adjustment | ✓ | ✓ | ✓ | ✓ |
| Automatic Airflow Adjustment | ✓ | ✓ | ✓ | ✓ |
| Blue Fin Heat Exchanger | ✓ | ✓ | ✓ | ✓ |
| Connectable Distributing Duct | ✓ | ✓ | ✓ | ✓ |
| Connectable Fresh Air Duct | ✓ | ✓ | ✓ | ✓ |
| Control Port | ✓ | ✓ | ✓ | ✓ |
| Economy Mode | ✓ | ✓ | ✓ | ✓ |
| Filter Sign | ✓ | ✓ | ✓ | ✓ |
| Fresh Air Intake | ✓ | ✓ | ✓ | ✓ |
| On-Off Timer | ✓ | ✓ | ✓ | ✓ |
| Program Timer | ✓ | ✓ | ✓ | ✓ |
| Weekly Timer | ✓ | ✓ | ✓ | ✓ |
| Zone Control | ✓ | ✓ | ✓ | ✓ |

For Product Specifications turn to page 35

HIGH STATIC THREE PHASE



ARTG36LHTB



ARTG45LHTB
ARTG60LHTA



ARTC72LATU



ARTC90LATU



BACKLIT CONTROLLER
UTY-RVNY



AOTG36/45/60LATT



AOTA72/90LALT

WHOLE HOME COMFORT AND CONTROL

COMFORT AND STABILITY

With smart technology, the air conditioner works at an optimum setting to create a comfortable environment for your home.

ENERGY EFFICIENCY

With built in features such as DC fan motors, DC rotary compressors and built in programmable timers, these systems use less power than ever before.

ZONE CONTROL

Optional zone control allows for 8 zones to be connected, giving greater temperature control to meet individual needs.

FEATURES CHECKLIST

| FEATURES | ARTG36LHTB | ARTG45LHTB | ARTG60LHTA | ARTC72LATU | ARTC90LATU |
|--------------------------------|------------|------------|------------|------------|------------|
| All DC Components | ✓ | ✓ | ✓ | ✓ | ✓ |
| Auto Changeover | ✓ | ✓ | ✓ | ✓ | ✓ |
| Auto Restart | ✓ | ✓ | ✓ | ✓ | ✓ |
| Automatic Fan Speed Adjustment | ✓ | ✓ | ✓ | ✓ | ✓ |
| Automatic Airflow Adjustment | | | | | |
| Blue Fin Heat Exchanger | ✓ | ✓ | ✓ | ✓ | ✓ |
| Connectable Distributing Duct | ✓ | ✓ | ✓ | ✓ | ✓ |
| Connectable Fresh Air Duct | ✓ | ✓ | ✓ | ✓ | ✓ |
| Control Port | ✓ | ✓ | ✓ | ✓ | ✓ |
| Economy Mode | ✓ | ✓ | ✓ | ✓ | ✓ |
| Filter Sign | ✓ | ✓ | ✓ | ✓ | ✓ |
| Fresh Air Intake | ✓ | ✓ | ✓ | ✓ | ✓ |
| On-Off Timer | ✓ | ✓ | ✓ | ✓ | ✓ |
| Program Timer | ✓ | ✓ | ✓ | ✓ | ✓ |
| Weekly Timer | ✓ | ✓ | ✓ | ✓ | ✓ |
| Zone Control | ✓ | ✓ | ✓ | ✓ | ✓ |

For Product Specifications turn to page 36

PRODUCT SPECIFICATIONS

BULKHEAD

| Model No. | Indoor unit | | ARTG09LLL B | ARTG12LLL B | ARTG18LLTA |
|--|--------------------------------------|-----------|-----------------------|----------------------|-----------------------|
| | Outdoor unit | | AOTG09LBCB | AOTG12LBCB | AOTG18LACC |
| Operation Type | | | Reverse Cycle | Reverse Cycle | Reverse Cycle |
| Power Source | V / Ph / HZ | | 240 / 1 / 50 | 240 / 1 / 50 | 240 / 1 / 50 |
| Capacity | Cooling | kWh | 2.60 (0.90-3.75) | 3.50 (0.90-4.17) | 5.20 (0.90-5.90) |
| | Heating | kWh | 3.50 (0.90-5.51) | 4.50 (0.90-5.96) | 6.00 (0.90-7.50) |
| Input Power | Cooling | kWh | 0.66 (Max 1.46) | 0.94 (Max 1.51) | 1.45 (Max 1.61) |
| | Heating | kWh | 0.83 (Max 1.88) | 1.19 (Max 2.09) | 1.56 (Max 2.31) |
| EER | Cooling | kWh / kWh | 3.94 | 3.72 | 3.59 |
| COP | Heating | kWh / kWh | 4.22 | 3.78 | 3.85 |
| AEER | Cooling | kWh / kWh | 3.824 | 3.645 | 3.601 |
| ACOP | Heating | kWh / kWh | 4.137 | 3.748 | 3.850 |
| TCSPF# Residential: Hot / Average / Cold | | kWh / kWh | 4.627 / 3.741 / 3.629 | 4.555 / 3.85 / 3.803 | 4.745 / 4.301 / 4.397 |
| HSPF^ Residential: Hot / Average / Cold | | kWh / kWh | 5.022 / 4.557 / 4.123 | 4.83 / 4.258 / 3.7 | 4.554 / 4.087 / 3.554 |
| Running Current | Cooling / Heating | amps | 3.10 / 3.90 | 4.30 / 5.30 | 6.10 / 6.60 |
| Moisture Removal | | l / hr | 0.70 | 1.30 | 2.00 |
| Noise Level | Indoor Sound Pressure (High / Quiet) | dBA | 28 / 25 | 29 / 26 | 32 / 27 |
| | Outdoor Sound Pressure | dBA | 44 | 49 | 55 |
| | Outdoor Sound Power | dBA | 59 | 61 | 71 |
| Static Pressure Range | | Pa | 0-90 | 0-90 | 0-90 |
| Air Circulation (Indoor - High Fan) | | l / sec | 167 | 181 | 261 |
| Net Dimensions (H x W x D) | Indoor Unit | mm | 198 x 700 x 620 | 198 x 700 x 620 | 198 x 900 x 620 |
| | | kgs | 18 | 18 | 23 |
| | Outdoor Unit | mm | 620 x 790 x 290 | 620 x 790 x 290 | 620 x 790 x 290 |
| | | kgs | 39 | 39 | 41 |
| Piping Connections (Liquid / Suction) | | mm | Ø6.35 / Ø9.52 | Ø6.35 / Ø9.52 | Ø6.35 / Ø12.70 |
| Max Pipe Length (Precharged Length) | | m | 20 (15) | 20 (15) | 30 (15) |
| Max Height Difference | | m | 15 | 15 | 20 |
| Operation Range | Cooling | °CDB | -10 to 46 | -10 to 46 | -10 to 46 |
| | Heating | °CDB | -15 to 24 | -15 to 24 | -15 to 24 |
| Refrigerant | | | R410A | R410A | R410A |

#Total Cooling Seasonal Performance Factor ^Heating Seasonal Performance Factor

PRODUCT SPECIFICATIONS

SLIMLINE

| Model No. | Indoor unit | | ARTG24LMLC | ARTA30LBTU | ARTA36LATU | ARTA45LATU |
|--|--------------------------------------|-----------|-----------------------|-----------------------|----------------------|-----------------------|
| | Outdoor unit | | AOTG24LATC | AOTA30LGTL | AOTA36LCTL | AOTA45LCTL |
| Operation Type | | | Reverse Cycle | Reverse Cycle | Reverse Cycle | Reverse Cycle |
| Power Source | V / Ph / HZ | | 240 / 1 / 50 | 240 / 1 / 50 | 240 / 1 / 50 | 240 / 1 / 50 |
| Capacity | Cooling | kWh | 7.10 (2.90-8.00) | 8.50 (2.80-10.00) | 10.00 (3.80-11.20) | 11.50 (4.00-13.30) |
| | Heating | kWh | 8.00 (2.20-9.10) | 10.00 (2.70-11.20) | 11.20 (4.00-14.00) | 14.00 (4.20-15.50) |
| Input Power | Cooling | kWh | 2.09 (Max 2.40) | 2.65 (Max 4.04) | 3.11 (Max 4.66) | 3.56 (Max 5.02) |
| | Heating | kWh | 2.19 (Max 2.75) | 2.68 (Max 4.04) | 3.02 (Max 4.78) | 4.02 (Max 5.02) |
| EER | Cooling | kWh / kWh | 3.40 | 3.20 | 3.21 | 3.23 |
| COP | Heating | kWh / kWh | 3.65 | 3.73 | 3.71 | 3.48 |
| AEER | Cooling | kWh / kWh | 3.428 | 3.193 | 3.247 | 3.212 |
| ACOP | Heating | kWh / kWh | 3.736 | 3.739 | 3.688 | 3.468 |
| TCSPF# Residential: Hot / Average / Cold | kWh / kWh | | 4.016 / 3.693 / 3.732 | 3.866 / 3.569 / 3.622 | 4.214 / 3.91 / 4.025 | 3.949 / 3.689 / 3.766 |
| HSPF^ Residential: Hot / Average / Cold | kWh / kWh | | 4.637 / 4.087 / 3.554 | 4.478 / 3.945 / 3.373 | 4.19 / 3.833 / 3.413 | 4.16 / 3.595 / 3.066 |
| Running Current | Cooling / Heating | amps | 8.8 / 9.2 | 11.1 / 11.2 | 13.0 / 12.7 | 14.9 / 16.8 |
| Moisture Removal | | l / hr | 2.50 | 2.50 | 3.00 | 4.00 |
| Noise Level | Indoor Sound Pressure (High / Quiet) | dB(A) | 31 / 25 | 42 / 29 | 40 / 26 | 42 / 28 |
| | Outdoor Sound Pressure | dB(A) | 54 | 55 | 54 | 55 |
| | Outdoor Sound Power | dB(A) | 68 | 69 | 68 | 69 |
| Static Pressure Range | | Pa | 30-150 | 30-150 | 30-150 | 30-150 |
| Air Circulation (Indoor - High Fan) | | l / sec | 305 | 542 | 514 | 583 |
| Net Dimensions (H x W x D) | Indoor Unit | mm | 270 x 1135 x 700 | 270 x 1135 x 700 | 270 x 1135 x 700 | 270 x 1135 x 700 |
| | | kgs | 38 | 40 | 40 | 40 |
| | Outdoor Unit | mm | 830 x 900 x 330 | 830 x 900 x 330 | 1290 x 900 x 330 | 1290 x 900 x 330 |
| | | kgs | 60 | 61 | 86 | 86 |
| Piping Connections (Liquid / Suction) | | mm | Ø6.35 / Ø15.88 | Ø9.52 / Ø15.88 | Ø9.52 / Ø15.88 | Ø9.52 / Ø15.88 |
| Max Pipe Length (Precharged Length) | | m | 30 (20) | 50 (20) | 50 (20) | 50 (20) |
| Max Height Difference | | m | 30 | 30 | 30 | 30 |
| Operation Range | Cooling | °CDB | -10 to 46 | -15 to 46 | -15 to 46 | -15 to 46 |
| | Heating | °CDB | -15 to 24 | -15 to 24 | -15 to 24 | -15 to 24 |
| Refrigerant | | | R410A | R410A | R410A | R410A |

#Total Cooling Seasonal Performance Factor ^Heating Seasonal Performance Factor

PRODUCT SPECIFICATIONS

MID STATIC SLIMLINE R32

| Model No. | Indoor unit | | ARTH18KMTAP | ARTH24KMTAP | ARTH30KMTAP | ARTH36KMTAP | ARTH45KMTAP | ARTH54KMTAP |
|--|--------------------------------------|-----------------------|-----------------------|-----------------------|-----------------------|-----------------------|-----------------------|------------------|
| | Outdoor unit | | AOTH18KBTA | AOTH24KBTA | AOTH30KBTA | AOTH36KBTA | AOTH45KBTA | AOTH54KBTA |
| Operation Type | | | Reverse Cycle | Reverse Cycle | Reverse Cycle | Reverse Cycle | Reverse Cycle | Reverse Cycle |
| Power Source | V / Ph / HZ | | 240 / 1 / 50 | 240 / 1 / 50 | 240 / 1 / 50 | 240 / 1 / 50 | 240 / 1 / 50 | 240 / 1 / 50 |
| Capacity | Cooling | kWh | 5.0 (0.9-6.4) | 7.1 (1.8-8.1) | 8.5 (2.8-10.3) | 10.0 (2.8-11.4) | 12.5 (4.0-14.0) | 13.0 (4.5-15.0) |
| | Heating | kWh | 6.0 (0.9-7.8) | 8.0 (2.0-9.1) | 10.0 (2.7-11.3) | 11.2 (2.7-14.0) | 14.0 (4.2-16.5) | 15.0 (4.7-18.0) |
| Input Power | Cooling | kWh | 1.37 (Max. 1.95) | 2.15 (Max. 2.92) | 2.6 (Max. 4.28) | 3.23 (Max. 4.3) | 4 (Max. 5.18) | 4.31 (Max. 5.19) |
| | Heating | kWh | 1.58 (Max. 2.39) | 2.19 (Max. 2.67) | 2.65 (Max. 4.28) | 3.3 (Max. 4.5) | 4 (Max. 5.22) | 4.45 (Max. 5.23) |
| EER | Cooling | kWh / kWh | 3.65 | 3.3 | 3.27 | 3.1 | 3.13 | 3.02 |
| COP | Heating | kWh / kWh | 3.8 | 3.65 | 3.77 | 3.39 | 3.5 | 3.37 |
| AEER | Cooling | kWh / kWh | 3.619 | 3.284 | 3.26 | 3.089 | 3.119 | 3.011 |
| ACOP | Heating | kWh / kWh | 3.77 | 3.634 | 3.763 | 3.387 | 3.494 | 3.365 |
| TCSPF# Residential: Hot / Average / Cold | kWh / kWh | 5.012 / 4.663 / 4.844 | 4.558 / 4.294 / 4.484 | 4.483 / 4.271 / 4.474 | 4.338 / 4.141 / 4.359 | 4.462 / 4.265 / 4.509 | 4.354 / 4.163 / 4.412 | |
| HSPF^ Residential: Hot / Average / Cold | kWh / kWh | 4.74 / 4.182 / 3.616 | 4.694 / 3.996 / 3.375 | 4.723 / 4.117 / 3.501 | 4.568 / 3.815 / 3.201 | 4.512 / 3.881 / 3.295 | 4.371 / 3.688 / 3.113 | |
| Running Current | Cooling / Heating | amps | 5.9 / 6.8 | 9.1 / 9.2 | 11 / 11.2 | 13.6 / 13.9 | 16.8 / 16.8 | 18.1 / 18.7 |
| Moisture Removal | | l / hr | 2.3 | 3 | 1.6 | 2.9 | 4.5 | 5 |
| Noise Level | Indoor Sound Pressure (High / Quiet) | dBA | 33 / 27 | 38 / 27 | 38 / 28 | 38 / 28 | 40 / 29 | 40 / 29 |
| | Outdoor Sound Pressure | dBA | 48 | 48 | 51 | 53 | 55 | 55 |
| | Outdoor Sound Power | dBA | 62 | 68 | 69 | 70 | 71 | 72 |
| Static Pressure Range | | Pa | 50-150 | 50-150 | 50-150 | 50-150 | 50-150 | 50-150 |
| Air Circulation (Indoor - High Fan) | | l / sec | 300 / 181 | 417 / 239 | 542 / 336 | 575 / 356 | 600 / 367 | 600 / 367 |
| Net Dimensions (HxWxD) | Indoor Unit | mm | 240 x 1000 x 700 | 240 x 1000 x 700 | 240 x 1400 x 700 | 240 x 1400 x 700 | 240 x 1400 x 700 | 240 x 1400 x 700 |
| | | kgs | 32 | 32 | 42 | 42 | 42 | 42 |
| | Outdoor Unit | mm | 632 x 799 x 290 | 716 x 820 x 315 | 788 x 940 x 320 | 788 x 940 x 320 | 988x 940 x 320 | 988x 940 x 320 |
| | | kgs | 36 | 42 | 52 | 52 | 67 | 67 |
| Piping Connections (Liquid / Suction) | | mm | Ø6.35 / Ø12.7 | Ø6.35 / Ø12.7 | Ø9.52 / Ø15.88 | Ø9.52 / Ø15.88 | Ø9.52 / Ø15.88 | Ø9.52 / Ø15.88 |
| Max Pipe Length (Precharged Length) | | m | 30 (20) | 30 (20) | 50 (30) | 50 (30) | 50 (30) | 50 (30) |
| Max Height Difference | | m | 30 | 30 | 30 | 30 | 30 | 30 |
| Operation Range | Cooling | °CDB | -10 to 50 | -10 to 50 | -10 to 50 | -10 to 50 | -10 to 50 | -10 to 50 |
| | Heating | °CDB | -15 to 24 | -15 to 24 | -15 to 24 | -15 to 24 | -15 to 24 | -15 to 24 |
| Refrigerant | | | R32 | R32 | R32 | R32 | R32 | R32 |

#Total Cooling Seasonal Performance Factor ^Heating Seasonal Performance Factor

PRODUCT SPECIFICATIONS

MID STATIC SLIMLINE R32 (HP)

| Model No. | Indoor unit | | ARTH24KMTAP | ARTH30KMTAP |
|--|--------------------------------------|-----------|-----------------------|-----------------------|
| | Outdoor unit | | AOTH24KCTA | AOTH30KCTA |
| Operation Type | | | Reverse Cycle | Reverse Cycle |
| Power Source | V / Ph / HZ | | 240 / 1 / 50 | 240 / 1 / 50 |
| Capacity | Cooling | kWh | 7.1 (3.3-8.5) | 8.5 (4.1-10.5) |
| | Heating | kWh | 8.0 (3.6-10.5) | 10.0 (4.2-11.5) |
| Input Power | Cooling | kWh | 1.85 (Max. 2.72) | 2.26 (Max. 3.38) |
| | Heating | kWh | 1.93 (Max. 2.89) | 2.47 (Max. 3.12) |
| EER | Cooling | kWh / kWh | 3.84 | 3.76 |
| COP | Heating | kWh / kWh | 4.15 | 4.05 |
| AEER | Cooling | kWh / kWh | 3.823 | 3.749 |
| ACOP | Heating | kWh / kWh | 4.13 | 4.037 |
| TCSPF# Residential: Hot / Average / Cold | | kWh / kWh | 4.712 / 4.474 / 4.598 | 4.8 / 4.569 / 4.727 |
| HSPF^ Residential: Hot / Average / Cold | | kWh / kWh | 4.962 / 4.491 / 4.043 | 5.036 / 4.472 / 3.899 |
| Running Current | Cooling / Heating | amps | 8 / 8.4 | 9.6 / 10.5 |
| Moisture Removal | | l / hr | 1.7 | 1.6 |
| Noise Level | Indoor Sound Pressure (High / Quiet) | | dBA | 38 / 27 |
| | Outdoor Sound Pressure | | dBA | 48 |
| | Outdoor Sound Power | | dBA | 67 |
| Static Pressure Range | | Pa | 50-150 | 50-150 |
| Air Circulation (Indoor - High Fan) | | l / sec | 417 / 239 | 542 / 336 |
| Net Dimensions (H x W x D) | Indoor Unit | mm | 240 x 1000 x 700 | 240 x 1400 x 700 |
| | | kgs | 32 | 42 |
| | Outdoor Unit | mm | 988 x 940 x 320 | 988 x 940 x 320 |
| | | kgs | 63 | 64 |
| Piping Connections (Liquid / Suction) | | mm | Ø6.35 / Ø12.7 | Ø9.52 / Ø15.88 |
| Max Pipe Length (Precharged Length) | | m | 75 (30) | 75 (30) |
| Max Height Difference | | m | 30 | 30 |
| Operation Range | Cooling | °CDB | -10 to 50 | -10 to 50 |
| | Heating | °CDB | -15 to 24 | -15 to 24 |
| Refrigerant | | | R32 | R32 |

#Total Cooling Seasonal Performance Factor ^Heating Seasonal Performance Factor

PRODUCT SPECIFICATIONS

SLIMLINE PLUS

| Model No. | Indoor unit | | ARTG24LHTDP | ARTG30LHTDP | ARTG36LHTDP | ARTG45LHTDP | ARTG54LHTDP |
|--|--------------------------------------|-----------|-----------------------|-----------------------|-----------------------|-----------------------|-----------------------|
| | Outdoor unit | | AOTG24LBCA | AOTG30LBTA | AOTG36LBTA | AOTG45LBTB | AOTG54LBTB |
| Operation Type | | | Reverse Cycle | Reverse Cycle | Reverse Cycle | Reverse Cycle | Reverse Cycle |
| Power Source | V / Ph / HZ | | 240 / 1 / 50 | 240 / 1 / 50 | 240 / 1 / 50 | 240 / 1 / 50 | 240 / 1 / 50 |
| Capacity | Cooling | kWh | 7.10 (2.90-8.00) | 8.50 (2.80-10.00) | 10.00 (3.80-11.20) | 11.50 (4.00-13.30) | 13.00 (6.20-15.20) |
| | Heating | kWh | 8.00 (2.20-9.10) | 10.00 (2.70-11.20) | 11.20 (4.00-14.00) | 14.00 (4.20-15.50) | 16.00 (6.20-18.00) |
| Input Power | Cooling | kWh | 2.08 (Max 4.06) | 2.65 (Max 4.06) | 3.11 (Max 4.78) | 3.33 (Max 5.00) | 3.92 (Max 5.58) |
| | Heating | kWh | 2.19 (Max 4.40) | 2.70 (Max 4.06) | 3.07 (Max 4.76) | 3.68 (Max 5.02) | 4.45 (Max 5.59) |
| EER | Cooling | kWh / kWh | 3.41 | 3.21 | 3.22 | 3.45 | 3.32 |
| COP | Heating | kWh / kWh | 3.65 | 3.70 | 3.65 | 3.80 | 3.60 |
| AEER | Cooling | kWh / kWh | 3.413 | 3.245 | 3.240 | 3.486 | 3.360 |
| ACOP | Heating | kWh / kWh | 3.739 | 3.696 | 3.734 | 3.951 | 3.644 |
| TCSPF# Residential: Hot / Average / Cold | kWh / kWh | | 4.79 / 4.475 / 4.673 | 4.142 / 3.899 / 4.024 | 4.45 / 4.197 / 4.388 | 4.635 / 4.367 / 4.539 | 4.535 / 4.287 / 4.476 |
| HSPF^ Residential: Hot / Average / Cold | kWh / kWh | | 4.448 / 3.679 / 3.022 | 4.335 / 3.921 / 3.469 | 4.429 / 3.765 / 3.161 | 4.379 / 3.898 / 3.354 | 4.224 / 3.644 / 3.092 |
| Running Current | Cooling / Heating | amps | 8.70 / 9.20 | 11.10 / 11.30 | 13.00 / 12.90 | 14.00 / 15.40 | 16.50 / 18.70 |
| Moisture Removal | | l / hr | 2.20 | 2.30 | 2.40 | 2.60 | 3.70 |
| Noise Level | Indoor Sound Pressure (High / Quiet) | dBA | 33 / 21 | 37 / 29 | 36 / 26 | 40 / 29 | 40 / 29 |
| | Outdoor Sound Pressure | dBA | 55 | 53 | 54 | 55 | 55 |
| | Outdoor Sound Power | dBA | 69 | 69 | 70 | 69 | 70 |
| Static Pressure Range | | Pa | 30-200 | 30-200 | 30-200 | 30-200 | 30-200 |
| Air Circulation (Indoor - High Fan) | | l / sec | 378 | 472 | 569 | 708 | 708 |
| Net Dimensions (H x W x D) | Indoor Unit | mm | 300 x 1000 x 700 | 300 x 1000 x 700 | 300 x 1400 x 700 | 300 x 1400 x 700 | 300 x 1400 x 700 |
| | | kgs | 36 | 36 | 46 | 46 | 46 |
| | Outdoor Unit | mm | 620 x 790 x 290 | 830 x 900 x 330 | 830 x 900 x 330 | 1290 x 900 x 330 | 1290 x 900 x 330 |
| | | kgs | 41 | 61 | 61 | 86 | 93 |
| Piping Connections (Liquid / Suction) | | mm | Ø6.35 / Ø15.88 | Ø9.52 / Ø15.88 | Ø9.52 / Ø15.88 | Ø9.52 / Ø15.88 | Ø9.52 / Ø15.88 |
| Max Pipe Length (Precharged Length) | | m | 30 (15) | 50 (20) | 50 (20) | 50 (20) | 75 (30) |
| Max Height Difference | | m | 20 | 30 | 30 | 30 | 30 |
| Operation Range | Cooling | °CDB | -10 to 46 | -15 to 46 | -15 to 46 | -15 to 46 | -15 to 46 |
| | Heating | °CDB | -15 to 24 | -15 to 24 | -15 to 24 | -15 to 24 | -15 to 24 |
| Refrigerant | | | R410A | R410A | R410A | R410A | R410A |

#Total Cooling Seasonal Performance Factor ^Heating Seasonal Performance Factor

PRODUCT SPECIFICATIONS

HIGH STATIC SINGLE PHASE COMPACT OUTDOOR

| Model No. | Indoor unit | | ARTG30LHTA | ARTG36LHTA | ARTG45LHTA |
|--|--------------------------------------|-----------|-----------------------|-----------------------|-----------------------|
| | Outdoor unit | | AOTG30LBTC | AOTG36LBTC | AOTG45LBTC |
| Operation Type | | | Reverse Cycle | Reverse Cycle | Reverse Cycle |
| Power Source | V / Ph / HZ | | 240 / 1 / 50 | 240 / 1 / 50 | 240 / 1 / 50 |
| Capacity | Cooling | kWh | 8.50 (4.70-10.00) | 10.00 (5.00-11.40) | 11.50 (5.70-13.50) |
| | Heating | kWh | 10.00 (5.00-11.50) | 12.50 (5.10-14.00) | 14.00 (6.00-15.50) |
| Input Power | Cooling | kWh | 2.61 | 3.08 | 3.70 |
| | Heating | kWh | 2.70 | 3.42 | 3.84 |
| EER | Cooling | kWh / kWh | 3.26 | 3.25 | 3.11 |
| COP | Heating | kWh / kWh | 3.70 | 3.65 | 3.65 |
| AEER | Cooling | kWh / kWh | 3.243 | 3.241 | 3.109 |
| ACOP | Heating | kWh / kWh | 3.897 | 3.732 | 3.741 |
| TCSPF# Residential: Hot / Average / Cold | | kWh / kWh | 3.922 / 3.663 / 3.731 | 4.142 / 3.872 / 3.98 | 4.25 / 3.979 / 4.14 |
| HSPF^ Residential: Hot / Average / Cold | | kWh / kWh | 4.477 / 4.026 / 3.572 | 4.617 / 4.044 / 3.478 | 4.581 / 3.875 / 3.249 |
| Running Current | Cooling / Heating | amps | 11.00 / 11.30 | 13.00 / 14.40 | 15.50 / 16.10 |
| Moisture Removal | | l / hr | 0.90 | 1.50 | 0.90 |
| Noise Level | Indoor Sound Pressure (High / Quiet) | dBA | 41 / 36 | 41 / 36 | 43 / 35 |
| | Outdoor Sound Pressure | dBA | 53 | 52 | 58 |
| | Outdoor Sound Power | dBA | 69 | 68 | 72 |
| Static Pressure Range | | Pa | 60-210 | 60-210 | 60-260 |
| Air Circulation (Indoor - High Fan) | | l / sec | 695 | 695 | 903 |
| Net Dimensions (H x W x D) | Indoor Unit | mm | 400 x 1050 x 500 | 400 x 1050 x 500 | 425 x 1250 x 490 |
| | | kgs | 39 | 39 | 54 |
| | Outdoor Unit | mm | 830 x 900 x 330 | 914 x 970 x 370 | 914 x 970 x 370 |
| | | kgs | 61 | 75 | 75 |
| Piping Connections (Liquid / Suction) | | mm | Ø9.52 / Ø15.88 | Ø9.52 / Ø15.88 | Ø9.52 / Ø15.88 |
| Max Pipe Length (Precharged Length) | | m | 50 (20) | 50 (20) | 50 (20) |
| Max Height Difference | | m | 30 | 30 | 30 |
| Operation Range | Cooling | °CDB | -15 to 46 | -15 to 46 | -15 to 46 |
| | Heating | °CDB | -15 to 24 | -15 to 24 | -15 to 24 |
| Refrigerant | | | R410A | R410A | R410A |

#Total Cooling Seasonal Performance Factor ^Heating Seasonal Performance Factor

PRODUCT SPECIFICATIONS

HIGH STATIC SINGLE PHASE

| Model No. | Indoor unit | | ARTG30LHTA | ARTG36LHTA | ARTG45LHTA | ARTG54LHTC |
|--|--------------------------------------|-----------|-----------------------|-----------------------|-----------------------|-----------------------|
| | Outdoor unit | | AOTG30LATL | AOTG36LATL | AOTG45LATL | AOTG54LCTL |
| Operation Type | | | Reverse Cycle | Reverse Cycle | Reverse Cycle | Reverse Cycle |
| Power Source | V / Ph / HZ | | 240 / 1 / 50 | 240 / 1 / 50 | 240 / 1 / 50 | 240 / 1 / 50 |
| Capacity | Cooling | kWh | 9.00 (4.70-10.00) | 10.50 (5.00-11.40) | 12.50 (5.70-14.00) | 14.00 (6.20-15.20) |
| | Heating | kWh | 11.20 (5.00-12.10) | 12.10 (5.10-14.00) | 14.00 (6.00-16.00) | 16.00 (6.20-18.00) |
| Input Power | Cooling | kWh | 2.70 (Max 4.30) | 3.18 (Max 4.67) | 4.03 (Max 5.38) | 4.40 (Max 5.63) |
| | Heating | kWh | 2.95 (Max 4.30) | 3.30 (Max 4.80) | 3.80 (Max 5.38) | 4.37 (Max 5.63) |
| EER | Cooling | kWh / kWh | 3.33 | 3.30 | 3.10 | 3.18 |
| COP | Heating | kWh / kWh | 3.80 | 3.67 | 3.68 | 3.66 |
| AEER | Cooling | kWh / kWh | 3.350 | 3.338 | 3.205 | 3.166 |
| ACOP | Heating | kWh / kWh | 3.799 | 3.697 | 3.669 | 3.690 |
| TCSPF# Residential: Hot / Average / Cold | kWh / kWh | | 4.585 / 4.248 / 4.407 | 4.44 / 4.141 / 4.289 | 4.307 / 4.036 / 4.212 | 4.171 / 3.922 / 4.057 |
| HSPF^ Residential: Hot / Average / Cold | kWh / kWh | | 4.364 / 3.973 / 3.526 | 4.476 / 4.012 / 3.555 | 4.567 / 4.069 / 3.578 | 4.275 / 3.777 / 3.264 |
| Running Current | Cooling / Heating | amps | 11.40 / 12.40 | 13.40 / 13.90 | 16.90 / 16.00 | 18.40 / 18.30 |
| Moisture Removal | | l / hr | 1.00 | 1.50 | 1.00 | 1.50 |
| Noise Level | Indoor Sound Pressure (High / Quiet) | dB(A) | 41 / 36 | 41 / 36 | 43 / 35 | 45 / 36 |
| | Outdoor Sound Pressure | dB(A) | 52 | 52 | 55 | 55 |
| | Outdoor Sound Power | dB(A) | 67 | 68 | 69 | 70 |
| Static Pressure Range | | Pa | 60-210 | 60-210 | 60-260 | 60-260 |
| Air Circulation (Indoor - High Fan) | | l / sec | 695 | 695 | 903 | 986 |
| Net Dimensions (H x W x D) | Indoor Unit | mm | 400 x 1050 x 500 | 400 x 1050 x 500 | 425 x 1250 x 490 | 425 x 1250 x 490 |
| | | kgs | 39 | 39 | 54 | 54 |
| | Outdoor Unit | mm | 1290 x 900 x 330 | 1290 x 900 x 330 | 1290 x 900 x 330 | 1290 x 900 x 330 |
| | | kgs | 86 | 86 | 86 | 93 |
| Piping Connections (Liquid / Suction) | | mm | Ø9.52 / Ø15.88 | Ø9.52 / Ø15.88 | Ø9.52 / Ø15.88 | Ø9.52 / Ø15.88 |
| Max Pipe Length (Precharged Length) | | m | 50 (20) | 50 (20) | 50 (20) | 75 (30) |
| Max Height Difference | | m | 30 | 30 | 30 | 30 |
| Operation Range | Cooling | °CDB | -5 to 46 | -5 to 46 | -5 to 46 | -15 to 46 |
| | Heating | °CDB | -15 to 24 | -15 to 24 | -15 to 24 | -15 to 24 |
| Refrigerant | | | R410A | R410A | R410A | R410A |

#Total Cooling Seasonal Performance Factor ^Heating Seasonal Performance Factor

PRODUCT SPECIFICATIONS

HIGH STATIC INFINITY RANGE - SINGLE PHASE & THREE PHASE

| Model No. | Indoor unit | | ARTG45LDTA | ARTG54LDTA | ARTG60LDTA | ARTG65LHTA |
|--|----------------------------------|-----------|-----------------------|-----------------------|-----------------------|---|
| | Outdoor unit | | AOTG45LBTA | AOTG54LBTA | AOTG60LBTA | AOTG65LRLA |
| Phase | | | Single Phase | Single Phase | Single Phase | Three Phase |
| Operation Type | | | Reverse Cycle | Reverse Cycle | Reverse Cycle | Reverse Cycle |
| Power Source | V / Ph / HZ | | 240 / 1 / 50 | 240 / 1 / 50 | 240 / 1 / 50 | 415 / 3 / 50 |
| Capacity | Cooling | kWh | 12.50 (5.70-14.00) | 14.00 (6.20-15.20) | 15.80 (6.20-16.30) | 18.00 (8.40-20.00) |
| | Heating | kWh | 14.00 (6.00-16.00) | 16.00 (6.20-18.00) | 18.00 (6.20-18.50) | 20.00 (7.20-22.00) |
| Input Power | Cooling | kWh | 3.91 (Max 5.36) | 4.31 (Max 5.60) | 4.92 (Max 6.15) | 5.82 |
| | Heating | kWh | 3.50 (Max 5.36) | 4.21 (Max 5.59) | 4.99 (Max 6.18) | 6.11 |
| EER | Cooling | kWh / kWh | 3.20 | 3.25 | 3.21 | 3.09 |
| COP | Heating | kWh / kWh | 4.00 | 3.80 | 3.61 | 3.77 |
| AEER | Cooling | kWh / kWh | 3.213 | 3.244 | 3.225 | 3.174 |
| ACOP | Heating | kWh / kWh | 3.993 | 3.855 | 3.718 | 3.483 |
| TCSPF# Residential: Hot / Average / Cold | kWh / kWh | | 4.16 / 3.934 / 4.073 | 4.107 / 3.894 / 4.016 | 4.239 / 4.025 / 4.183 | 4.121 / 3.816 / 3.936 |
| HSPF^ Residential: Hot / Average / Cold | kWh / kWh | | 4.728 / 4.211 / 3.627 | 4.317 / 3.796 / 3.25 | 4.061 / 3.247 / 2.78 | 4.609 / 4.167 / 3.819 |
| Running Current | Cooling / Heating | amps | 16.40 / 14.70 | 18.10 / 17.70 | 20.70 / 21.00 | 14.00 ^o / 13.10 ^o |
| Moisture Removal | | l / hr | 1.50 | 1.80 | 2.10 | 4.50 |
| Noise Level | Indoor Sound Pressure | dBA | 40 / 32 | 41 / 34 | 44 / 35 | 45 / 35 |
| | Outdoor Sound Pressure (Cooling) | dBA | 55 | 55 | 57 | 51 |
| | Outdoor Sound Power (Cooling) | dBA | 69 | 70 | 72 | 68 |
| Static Pressure Range | | Pa | 60-250 | 60-250 | 60-250 | 60-200 |
| Air Circulation (Indoor - High Fan) | | l / sec | 931 | 1014 | 1139 | 1139 |
| Net Dimensions (H x W x D) | Indoor Unit | mm | 360 x 1400 x 850 | 360 x 1400 x 850 | 360 x 1400 x 850 | 360 x 1400 x 850 |
| | | kgs | 69 | 69 | 69 | 69 |
| | Outdoor Unit | mm | 1290 x 900 x 330 | 1290 x 900 x 330 | 1290 x 900 x 330 | 1428 x 1080 x 480 |
| | | kgs | 86 | 93 | 97 | 163 |
| Piping Connections (Liquid / Suction) | | mm | Ø9.52 / Ø15.88 | Ø9.52 / Ø15.88 | Ø9.52 / Ø15.88 | Ø12.70 / Ø25.40* |
| Max Pipe Length (Precharged Length) | | m | 50 (20) | 75 (30) | 75 (30) | 75 (30) |
| Max Height Difference | | m | 30 | 30 | 30 | 30 |
| Operation Range | Cooling | °CDB | -15 to 46 | -15 to 46 | -15 to 46 | -15 to 46 |
| | Heating | °CDB | -15 to 24 | -15 to 24 | -15 to 24 | -15 to 24 |
| Refrigerant | | | R410A | R410A | R410A | R410A |

#Total Cooling Seasonal Performance Factor ^Heating Seasonal Performance Factor ^oIndoor and outdoor unit
*Ø22.22mm pipe size is also an allowable and accepted size for Suction piping

PRODUCT SPECIFICATIONS

HIGH STATIC THREE PHASE

| Model No. | Indoor unit | | ARTG36LHTB | ARTG45LHTB | ARTG60LHTA | ARTC72LATU | ARTC90LATU |
|--|--------------------------------------|-----------|-----------------------|-----------------------|-----------------------|-----------------------|-----------------------|
| | Outdoor unit | | AOTG36LATT | AOTG45LATT | AOTG60LATT | AOTA72LALT | AOTA90LALT |
| Operation Type | | | Reverse Cycle | Reverse Cycle | Reverse Cycle | Reverse Cycle | Reverse Cycle |
| Power Source | V / Ph / HZ | | 415 / 3 / 50 | 415 / 3 / 50 | 415 / 3 / 50 | 415 / 3 / 50 | 415 / 3 / 50 |
| Capacity | Cooling | kWh | 10.50 (5.00-11.40) | 12.50 (5.70-14.00) | 15.00 (6.20-17.50) | 20.30 (10.80-23.50) | 25.00 (11.20-28.00) |
| | Heating | kWh | 12.10 (5.10-14.00) | 14.00 (6.00-16.20) | 18.00 (6.20-20.00) | 22.60 (12.00-26.50) | 28.00 (12.50-31.50) |
| Input Power | Cooling | kWh | 3.18 (Max 5.63) | 3.82 (Max 6.37) | 4.70 (Max 7.40) | 6.25 (Max 10.10) | 7.82 (Max 12.50) |
| | Heating | kWh | 3.30 (Max 5.63) | 3.67 (Max 6.37) | 5.15 (Max 7.40) | 6.27 (Max 10.10) | 8.24 (Max 12.50) |
| EER | Cooling | kWh / kWh | 3.30 | 3.27 | 3.19 | 3.25 | 3.20 |
| COP | Heating | kWh / kWh | 3.67 | 3.81 | 3.50 | 3.60 | 3.40 |
| AEER | Cooling | kWh / kWh | 3.285 | 3.248 | 3.174 | 3.315 | 3.172 |
| ACOP | Heating | kWh / kWh | 3.733 | 3.988 | 3.483 | 3.698 | 3.505 |
| TCSPF# Residential: Hot / Average / Cold | | kWh / kWh | 4.491 / 4.045 / 4.144 | 4.309 / 3.926 / 4.018 | 4.158 / 3.829 / 3.927 | 3.857 / 3.414 / 3.409 | 3.838 / 3.451 / 3.469 |
| HSPF* Residential: Hot / Average / Cold | | kWh / kWh | 4.341 / 3.937 / 3.529 | 4.351 / 3.967 / 3.518 | 4.277 / 3.364 / 2.867 | 3.629 / 3.434 / 3.119 | 3.497 / 3.196 / 2.827 |
| Running Current | Cooling / Heating | amps | 4.60 / 4.80 | 5.50 / 5.30 | 6.70 / 7.30 | 9.30 / 9.30 | 11.50 / 12.10 |
| Moisture Removal | | l / hr | 1.50 | 1.00 | 2.00 | 4.50 | 6.00 |
| Noise Level | Indoor Sound Pressure (High / Quiet) | dBa | 41 / 36 | 43 / 35 | 45 / 36 | 47 / 41 | 49 / 43 |
| | Outdoor Sound Pressure | dBa | 51 | 54 | 56 | 57 | 58 |
| | Outdoor Sound Power | dBa | 67 | 68 | 71 | 74 | 76 |
| Static Pressure Range | | Pa | 60-210 | 60-260 | 60-260 | 50-250 | 50-250 |
| Air Circulation (Indoor - High Fan) | | l / sec | 695 | 903 | 986 | 1195 | 1347 |
| Net Dimensions H x W x D | Indoor Unit | mm | 400 x 1050 x 500 | 425 x 1250 x 490 | 425 x 1250 x 490 | 450 x 1587 x 700 | 550 x 1587 x 700 |
| | | kgs | 39 | 54 | 54 | 100 | 110 |
| | Outdoor Unit | mm | 1290 x 900 x 330 | 1290 x 900 x 330 | 1290 x 900 x 330 | 1690 x 930 x 765 | 1690 x 930 x 765 |
| | | kgs | 104 | 104 | 104 | 215 | 215 |
| Piping Connections (Liquid / Suction) | | mm | Ø9.52 / Ø15.88 | Ø9.52 / Ø15.88 | Ø9.52 / Ø15.88 | Ø12.70 / Ø25.40 | Ø12.70 / Ø25.40 |
| Max Pipe Length (Precharged Length) | | m | 75 (30) | 75 (30) | 75 (30) | 75 (20) | 75 (20) |
| Max Height Difference | | m | 30 | 30 | 30 | 30 | 30 |
| Operation Range | Cooling | °CDB | -15 to 46 | -15 to 46 | -15 to 46 | -5 to 46 | -5 to 46 |
| | Heating | °CDB | -15 to 24 | -15 to 24 | -15 to 24 | -15 to 24 | -15 to 24 |
| Refrigerant | | | R410A | R410A | R410A | R410A | R410A |

#Total Cooling Seasonal Performance Factor ^Heating Seasonal Performance Factor *Indoor and outdoor unit.



SPECIFICATIONS & FEATURES

Products in this brochure contain R410A refrigerant. Please refer to specifications before installation and servicing this product. Only persons and / or companies qualified and experienced in the installation, service and repair of refrigerant products should be permitted to do so. The purchaser must ensure that the person and / or company who is to install, service or repair this air conditioner has qualifications and experience in refrigerant products. Suitable access for warranty and service is required. Future improvements, specifications, designs of product and availability are subject to change without notice. Please check with your Dealer.

ALL CAPACITY AND ENERGY EFFICIENCY RATINGS ARE BASED ON AS / NZS3823.2.

| | | |
|---------|---------------------|-------------------|
| COOLING | Indoor temperature | 27°C DB / 19°C WB |
| | Outdoor temperature | 35°C DB |
| HEATING | Indoor temperature | 20°C DB |
| | Outdoor temperature | 7°C DB / 6°C WB |

Running current is at rated conditions (AS3823) and does not include compressor start-up or variations in power supply and load conditions.

FUJITSU - COMMUNITY

SPORTING CHANCE

Fujitsu General Australia is extremely proud to be a major sponsor of the Sporting Chance Cancer Foundation.

Established in 1996 by a number of high profile Australian sports men and women, including Fujitsu General's longstanding ambassador Mark Taylor, Sporting Chance is a not-for-profit organisation that helps provide home support and care to children with cancer.

To date, Fujitsu General has donated more than \$9.5M to this worthy cause, with a percentage of sales from Fujitsu's air conditioning units going towards the funding of outreach programs and exploring better ways to treat and overcome cancer.

This support has enabled the Sporting Chance Cancer Foundation to fund nurses across Australia allowing children to receive improved cancer care closer to home. This funding also allows for remote treatment and care for families, and considerably reduces the time spent travelling to and from the nearest hospital, which could be thousands of kilometres from home.

Sporting Chance initiatives allow families to spend more quality time at home together, while still having access to the appropriate care for their child.

Fujitsu General is dedicated to the ongoing support of the Sporting Chance Cancer Foundation and its commitment to improving the cancer care available for children, as well as research and new treatment developments.





FUJITSU

AUSTRALIA'S FAVOURITE AIR®



If you are looking for an air conditioner that you can trust to keep you comfortable all year round, my advice is to look no further than a Fujitsu.

They are efficient, effective, and beautifully designed, I should know, I bought one myself.

So for an air conditioner you can trust, go with the name you know, Fujitsu, It's Australia's Favourite Air®.



Mark Taylor

FUJITSU GENERAL AUSTRALIA

ABN 55 001 229 554 • A SUBSIDIARY OF FUJITSU GENERAL LIMITED

fujitsugeneral.com.au

email: contact@fujitsugeneral.com.au

Ph: 1300 882 201



Proud supporters of:



For every air conditioner sold, a donation is made to the Sporting Chance Cancer Foundation.